



**SOUTHERNIMPLANTS®**

Innovative Treatment Solutions

## Implant Ordering Guide



Innovative Treatment Solutions for  
Optimal Patient Outcomes

## External Hex Range

- The External Hex is the most used, and versatile connection system worldwide. It is also the most documented, over a full spectrum of restorative applications.
- It is a "more forgiving" connection system in the case of poor alignment, and has an extremely wide range of prosthetic options, making it the choice of many "top-end" users.
- Also available in the MSc-Range with a 3mm machined surface coronal area of specific surface roughness.



### External Hex Connection

	CODE	LENGTHS	MSc	Cylindrical or Tapered
Ø3.0	IP-	8.5 / 10 / 11.5 / 13 / 15	✓	T
Ø3.25	IBN	8.5 / 10 / 11.5 / 13 / 15 / 18	✓	C
	IBNT	8.5 / 10 / 11.5 / 13 / 15 / 18		T
Ø3.75	IBS	7 / 8.5 / 10 / 11.5 / 13 / 15 / 18 / 20	✓	C
Ø4.0	IBT	6 / 8.5 / 10 / 11.5 / 13 / 15	✓	T
Ø5.0	BA	6 / 7 / 8.5 / 10 / 11.5 / 13 / 15 / 18	✓	C
	BAT	6 / 8.5 / 10 / 11.5 / 13 / 15 / 18	✓	T
Ø6.0	BBBS	7 / 8.5 / 10 / 11.5 / 13 / 15		C
	BBBT	6 / 8.5 / 10 / 11.5 / 13 / 15 / 18		T



### External Hex Connection, Co-Axis®

- Prosthetic platform angled at 12°, 24° or 36°
- Supplied with fixture mount.

	CODE	LENGTHS	MSc	Cylindrical or Tapered
Ø3.25	IBNT12d-	8.5 / 10 / 11.5 / 13 / 15 / 18	✓	T
Ø4.0	IBT12d-	8.5 / 10 / 11.5 / 13 / 15 / 18	✓	T
Ø4.0	IBR12d-	8.5 / 10 / 11.5 / 13 / 15 / 18	✓	T
	IBR24d-	8.5 / 10 / 11.5 / 13 / 15 / 18 / 20 / 22 / 24	✓	T
Ø5.0	BAT12d-	8.5 / 10 / 11.5 / 13 / 15 / 18	✓	T
Ø5.0	BAR12d-	8.5 / 10 / 11.5 / 13 / 15 / 18	✓	T
	BAR24d-	8.5 / 10 / 11.5 / 13 / 15 / 18	✓	T
	BAR36d-	8.5 / 10 / 11.5 / 13 / 15 / 18	✓	T
Ø6.0	BBBT12d-	10 / 11.5 / 13 / 15 / 18		T
	BBBT24d-	10 / 11.5 / 13 / 15		



### External Hex Connection, MAX

	CODE	LENGTHS	MSc	Cylindrical or Tapered
Ø6.0	MAX-6-	6 / 7 / 9 / 11	✓	T
Ø7.0	MAX-7-	7 / 9 / 11	✓	T
Ø8.0	MAX-8™-	7 / 9 / 11	✓	T
Ø9.0	MAX-9-	7 / 9 / 11	✓	T

## External Hex Range (Continued)



### External Hex Connection, INVERTA® Straight

CODE	LENGTHS	Cylindrical or Tapered
3.5/4.5 IV-EX	10 / 11 / 13 / 15	T
4.0/5.0 IV-EX	10 / 11 / 13 / 15	T

### External Hex Connection, INVERTA Co-Axis

CODE	LENGTHS	Cylindrical or Tapered
3.5/4.5 IV-EX	11 / 13 / 15	T
4.0/5.0 IV-EX	11 / 13 / 15	T

## PROVATA® Range

- The PROVATA Implant features the popular Internal Hex connection system, with the tapered body shape of the External Hex implant range, leading to reduced inventory requirements.
- Built-in beveled platform switch.
- Same thread throughout the implant body with a smooth machined collar.

### PROVATA



	CODE	LENGTHS	Cylindrical or Tapered
Ø4.0	PRO4	08 / 10 / 11 / 13 / 15 / 18	T
Ø5.0	PRO5	08 / 10 / 11 / 13 / 15 / 18	T

### PROVATA, Co-Axis®

- Prosthetic platform angled at 12°.



	CODE	LENGTHS	Cylindrical or Tapered
Ø4.0	PRO12d4	08 / 10 / 11 / 13 / 15 / 18	T
Ø5.0	PRO12d5	08 / 10 / 11 / 13 / 15 / 18	T

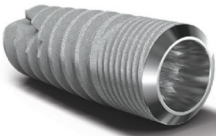
### PROMAX®



	CODE	LENGTHS	Cylindrical or Tapered
Ø6.0	PROMAX6	07 / 09 / 11	T
Ø7.0	PROMAX7	07 / 09 / 11	T
Ø8.0	PROMAX8	07 / 09 / 11	T
Ø9.0	PROMAX9	07 / 09 / 11	T

# Deep Conical Range

- Micro-threads that maximize bone-implant contact and optimally distribute load in the coronal region.
- All DC Implants are manufactured from a special high strength Grade IV pure Titanium (ASTM-F67-13 with UTS>920MPa). This material is used because of its proven fatigue performance, reliability and bio-compatibility.



## Deep Conical Connection

	CODE	LENGTHS	Cylindrical or Tapered
Ø3.0	DCT30	9 / 11 / 13	T
	DCC30	11 / 13 / 15	C
Ø3.5	DCT35	08 / 09 / 11 / 13 / 15	T
	DCC35	08 / 09 / 11 / 13 / 15	C
Ø4.0	DCT40	06 / 08 / 09 / 11 / 13 / 15	T
	DCC40	06 / 08 / 09 / 11 / 13 / 15	C
Ø5.0	DCT50	09 / 11 / 13 / 15	T
	DCC50	09 / 11 / 13 / 15	C



## Deep Conical Connection, Co-Axis®

- Prosthetic platform angled at 12°.

	CODE	LENGTHS	Cylindrical or Tapered
Ø3.5	DCT35xx-12d	08 / 09 / 10 / 11 / 13 / 15	T
	DCC35xx-12d	08 / 09 / 10 / 11 / 13 / 15	C
Ø4.0	DCT40xx-12d	08 / 09 / 10 / 11 / 13 / 15	T
	DCC40xx-12d	08 / 09 / 10 / 11 / 13 / 15	C



## Deep Conical Connection, INVERTA® Straight

	CODE	LENGTHS	Cylindrical or Tapered
3.5/4.5 IV-DC		10 / 11 / 13 / 15	T
4.0/5.0 IV-DC		10 / 11 / 13 / 15	T

## Deep Conical Connection, INVERTA Co-Axis

	CODE	LENGTHS	Cylindrical or Tapered
3.5/4.5 IV-DC		11 / 13 / 15	T
4.0/5.0 IV-DC		11 / 13 / 15	T

## TRI-NEX® Range

- Internal tri-lobe prosthetic connection.
- Implants feature an internal hexagon below the tri-lobe connection, for higher insertion torque and minimizing the risk of implant interface deformation.
- Increased coronal collar thickness, increasing strength and facilitating platform switch.

### TRI-NEX Connection

	CODE	LENGTHS	Cylindrical or Tapered
Ø3.5	IA-LH-35-	8 / 10 / 11.5 / 13 / 16	T
	IA-LHS-35-	8 / 10 / 11.5 / 13 / 15	C
Ø4.3	IA-LH-43-	8 / 10 / 11.5 / 13 / 16	T
	IA-LHS-43-	8 / 10 / 11.5 / 13 / 15	C
Ø5.0	IA-LH-50-	8 / 10 / 11.5 / 13 / 16	T
	IA-LHS-50-	8 / 10 / 11.5 / 13 / 15	C
Ø6.0	IA-LH-60-	8 / 10 / 11.5 / 13 / 16	T

### TRI-NEX Connection, Co-Axis®

- Prosthetic platform angled at 12°.

	CODE	LENGTHS	Cylindrical or Tapered
Ø4.3	IA43-12d	10 / 11.5 / 13 / 16	T
Ø5.0	IA50-12d	10 / 11.5 / 13 / 16	T

### TRI-NEX Connection, TRI-MAX®

	CODE	LENGTHS	Cylindrical or Tapered
Ø7.0	TRI-MAX-7	7 / 9 / 11	T
Ø8.0	TRI-MAX-8	7 / 9 / 11	T
Ø9.0	TRI-MAX-9	7 / 9 / 11	T

\*Not all products available in all markets.

## Zygomatic and Oncology Implants

In the treatment of patients with a severely resorbed maxilla and/or missing maxillary bone, the longer lengths and 55° restorative platform of Zygomatic and Oncology Implants allows for zygomatic bone to be utilised ensuring optimal restorative platform emergence.

- Zygomatic Implants feature a 55° restorative platform with threads the entire length of the implant and MSc (machined) coronal threads.
- Zygan® Implants feature a Narrow-Apex with a smooth mid-section and, MSc coronal threads.
- Oncology Implants feature a 15mm threaded apex and MSc coronal machined surface that can be exposed to soft tissue in oncology resections.
- Zygex Implants offer the same features as the Oncology Implant with a narrower apex.



Zygomatic Zygan Oncology Zygex

	CODE	LENGTHS
Ø4.0	ZYG-55-	35N / 37.5N / 40N / 42.5N / 45N / 47.5N / 50N / 52.5N / 55N / 60N
Ø4.0	ZYGAN-	35 / 37.5 / 40 / 42.5 / 45 / 47.5 / 50 / 52.5 / 55 / 60
Ø4.0	ONC-55-	27.5N / 32.5N / 37.5N / 42.5N / 47.5N
Ø4.0	ZYGEX-	35 / 37.5 / 40 / 42.5 / 45 / 47.5 / 50 / 52.5 / 55

## Ultra-Short and Short Implants

Following traumatic accidents, oncology resections or congenital defects, patients present with sections of bone and connecting soft tissue missing. These can pose a significant visual disturbance that can have a drastic psychological effect on the patient. Failing surgical reconstruction, these missing parts can be replaced by realistic looking prostheses to provide a satisfactory aesthetic solution.

Southern Implants works with leading rehabilitation centres around the world, developing new protocols and products. Due to the nature of the condition being treated, each implantation site is unique, therefore Southern Implants does offer custom made devices.

A range of prosthetic components accompanies these implants to provide aides to assist the efficiency and quality of the prosthetic restoration.

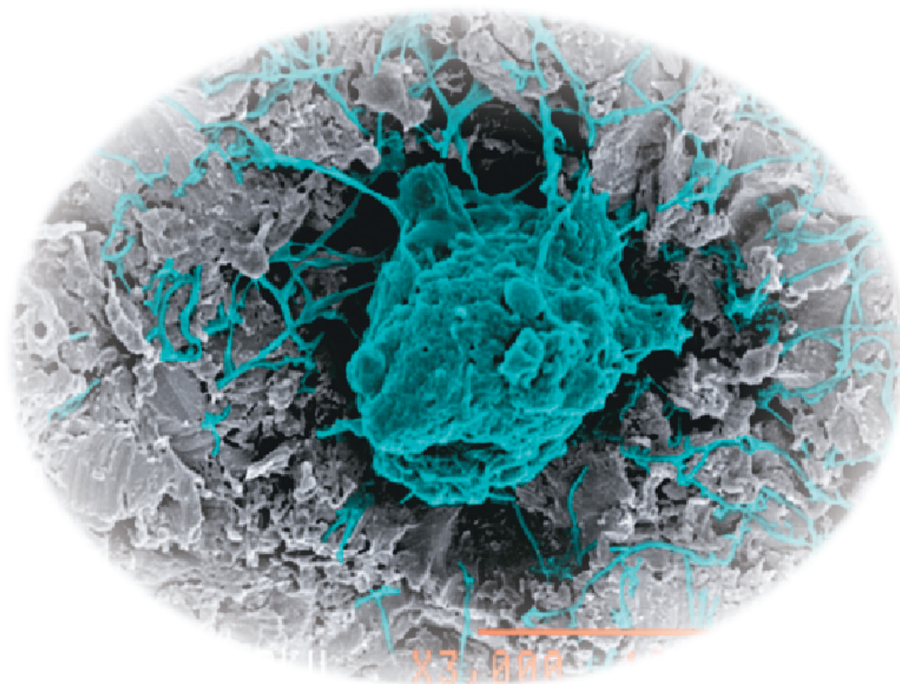
- The Ultra-Short IE & IET implants are ideal to be placed in the thin cortical bone found in the cranio-facial regions



	CODE	LENGTHS	Cylindrical or Tapered
Ø4.0	IE	3 / 4 / 6	C
Ø4.0	IET / IETi	4	T

NOTE: "i" internal drive, no fixture mount.





## Southern Implants' Surface is now called SInergy™ Surface

Manufactured from pure Titanium, our implants are air blasted with specifically sized Alumina particles, to achieve an abraded surface of the most stable of the Titanium oxides.

After extensive validation, this surface was put into widespread use in 1997 and has remained unchanged ever since.

The Titanium used for the last four years, is specifically cold-worked to exceed a UTS of 920 Mpa. The Fatigue strength of this material, exceeds that of equivalent alloyed implants.

**Southern Implants enhanced surface is a synergy of innovation and high-strength titanium.**

To learn more contact your  
Southern Implants Representative or visit [southernimplants.com](http://southernimplants.com)



**South Africa – Headquarters** 1 Albert Road, Irene, RSA  
**T:** +27-12-667-1046 | **E:** [info@southernimplants.com](mailto:info@southernimplants.com)

### Subsidiaries

**Australia**  
Southern Implants Australia  
**T:** +61-2-8076-9337  
**E:** [info@southernimplants.com.au](mailto:info@southernimplants.com.au)

**United Kingdom and Ireland**  
Southern Implants UK  
**T:** +44-20-8899-6845 / 6 / 7  
**E:** [info@southernimplants.co.uk](mailto:info@southernimplants.co.uk)

**USA and Canada**  
Southern Implants North America Inc.  
**T:** +1-561-472-0990  
**E:** [customercare@southernimplants.com](mailto:customercare@southernimplants.com)

**Southern Implants are distributed world-wide, please visit [southernimplants.com](http://southernimplants.com) for a list of Distributors.**

©2019 Southern Implants (Pty) Ltd. All rights reserved. Co-Axis, INVERTA, MAX-8, PROMAX, Southern Implants, TRI-NEX, TRI-MAX and Zygan are registered trademarks and SInergy is a trademark of Southern Implants (Pty) Ltd. Not all implants are available in all markets.