

≡ MEDEALIS

PROFESSIONAL DENTAL SYSTEMS

Docklocs®

OVERDENTURE ATTACHMENT SYSTEM



The New Standard in Overdenture Attachment Systems

Classic Design

Leveraging the most recognized overdenture attachment design globally, our highly experienced engineers have developed a solution that allows you and your patients to seamlessly transition to a superior product. The Docklocs® Overdenture Attachment System is the answer to the increasing demand for value-optimized products without a compromise in quality. With Docklocs, you can provide your patients with all of the benefits of a secure overdenture without the worry of unnecessary costs or unsatisfactory durability.



Dual Retention



Pivoting Technology



Compatibility



Precision Retention Inserts in Two Variations

Nylon (Industry Standard)

Retention inserts are a critical component of any overdenture attachment system and it is vital that their performance be consistently high to maintain patient satisfaction. The indispensable experience of our expert engineers ensures the performance and functionality of Docklocs retention inserts meet or exceed your expectations. Nylon retention inserts have evolved over the past 15 years to be the industry standard with high patient satisfaction.

High Performance Plastic

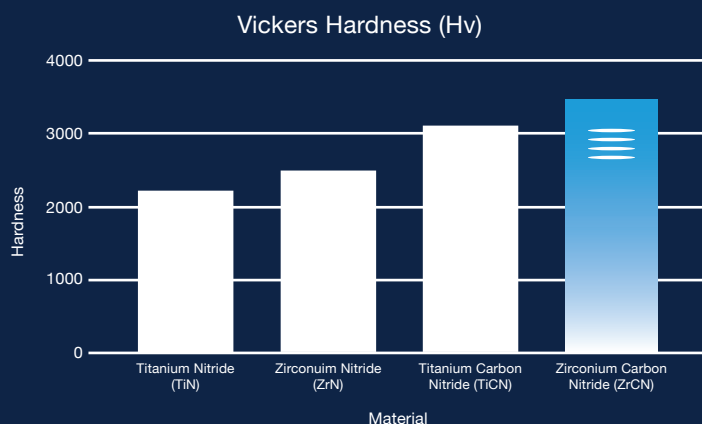
These retention inserts have a lower tendency to absorb water and a high resistance to chemicals and fats, including alcoholic disinfectants. The inserts are extremely durable and have an excellent dynamic load capacity.



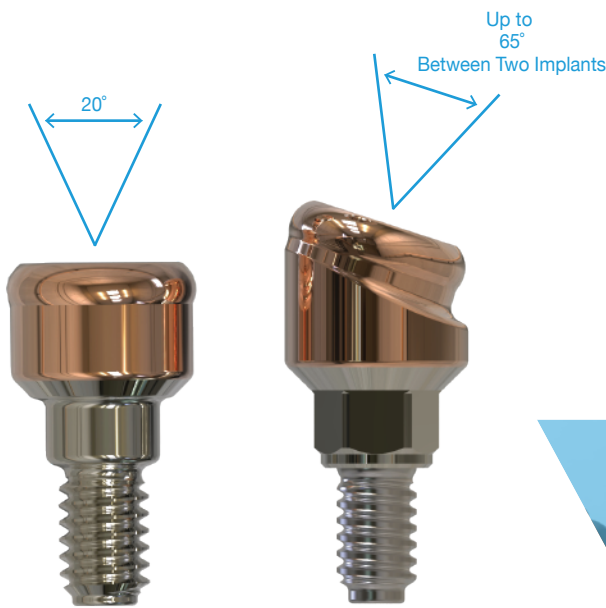
Innovative Coating Technology

Patented

Our patented fully biocompatible ceramic PVD (physical vapor deposition) coating provides many advantages over alternative abutment coatings. Comprised of a tremendously hard layer of Zirconium Carbon Nitride (ZrCN), the abutment coating is more resistant to abrasion and wear compared to other common coatings. Additionally, its impressive rose gold tone blends well with the gingiva and provides a premium appearance.



18° Angled Abutments

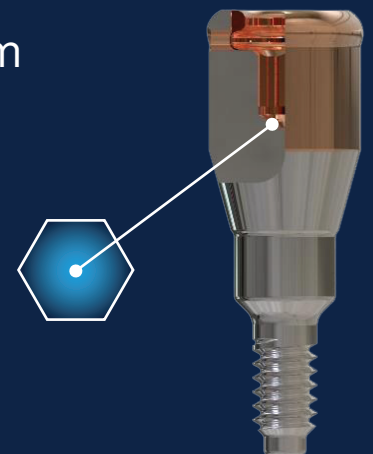


The availability of 18° angled abutments allows for the restoration of implants with up to 65° of divergence between them. This is a vast improvement over competitive systems that are not indicated for divergence over 20°. Further simplifying abutment placement are Docklocs indexing features and set screws, which allow angled abutments to be quickly and easily seated in the desired orientation.



Industry Standard 1,25mm Hex Drive Mechanism

In addition to the compatible tri-lobe drive mechanism, Docklocs abutments feature a 1,25mm hex drive mechanism in the center of the abutment for simple seating using commonly available drivers. This ensures that the abutments meet the needs of a wide variety of clinicians without requiring the purchase of additional tooling.



Quality without Compromise

Manufactured in accordance with the strict Quality Control standards required to maintain ISO 13485 status, the Docklocs Overdenture Attachment System is guaranteed to meet or exceed your expectations as well as those of your patients. Choose Docklocs to dramatically improve the quality of life for your edentulous patients with one of the most economical and reliable systems available.

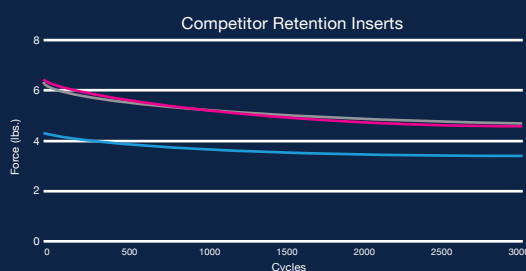
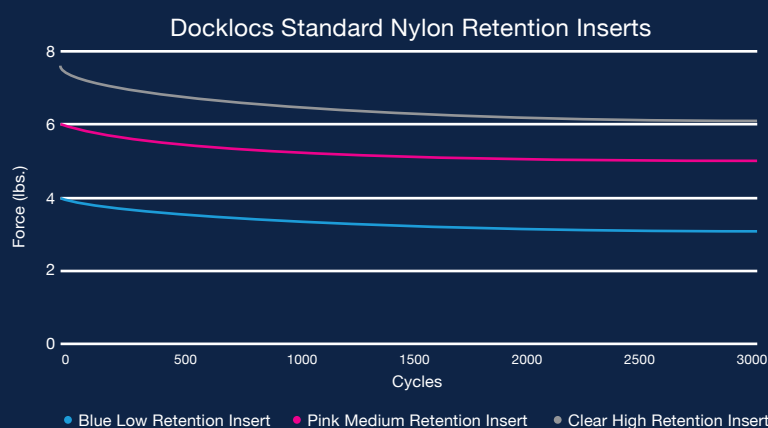
As a testament to our world class quality control, all Docklocs components are subject to a 100% Satisfaction Guarantee. Contact your authorized Docklocs distributor for more information.



Retention Insert Longevity

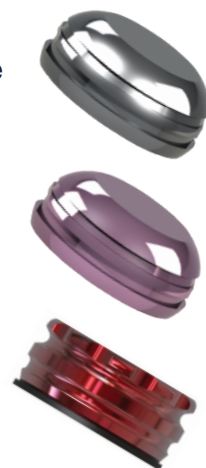
Optimal performance is of core importance when it comes to Docklocs retention inserts. During standardized testing*, Docklocs inserts performed consistently better than the competitor's inserts after the first 10 cycles, when the majority of retention loss occurs. Reliable long-term performance is also highly important as it ensures that retention inserts maintain functionality throughout their useful life. In an analysis of performance during 3000 on/off cycles, which equates to a patient removing their denture twice a day for 4 years, Docklocs inserts maintained satisfactory retention levels and better separation compared to the competitor's retention inserts. Choose Docklocs inserts to provide your patients with a predictable solution that meets your expectations of longevity and durability.

Lifetime Cycle Testing



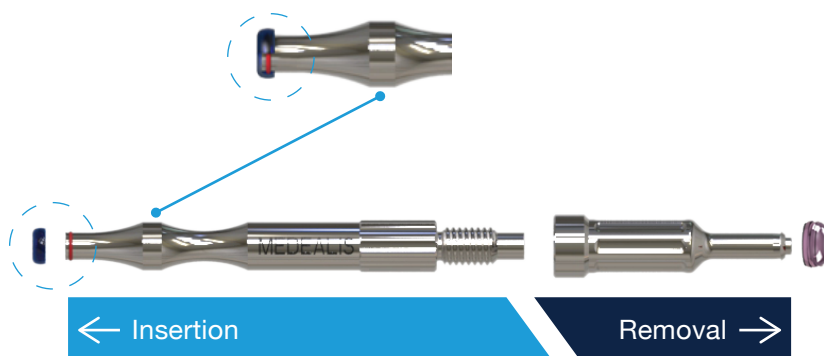
Enhanced Denture Housings

Docklocs Denture Caps have an easily recognizable design that minimizes width and has grooves and enhanced anti-rotational flat sections for additional mechanical retention in the denture. For prostheses with thin acrylic, select the Docklocs anodized Denture Cap for a more aesthetic appearance. Both Denture Caps are made from medical device grade titanium for superior performance.



Innovative System Tool

The Docklocs System Tool includes smartly designed enhancements to increase its functionality and ease of use. Comprised of separate ends for the insertion and removal of retention inserts, the System Tool is more ergonomic and intuitive than other tools available on the market. To ensure that retention inserts remain on the tool tip for simple insertion, a perfectly positioned o-ring provides just the right amount of force to avoid unintentionally dropped inserts. Further providing a premium feel, the System Tool is constructed of highly durable stainless steel polished to a smooth finish.



Laboratory Processing

Whether you prefer to process your patients' prostheses chairside or by utilizing your preferred laboratory partner, Docklocs transfer components ensure an accurate representation of abutment location in impressions and on mouth models. Available laboratory processing components include abutment analogs, impression coping and processing spacer.



Abutment Drivers

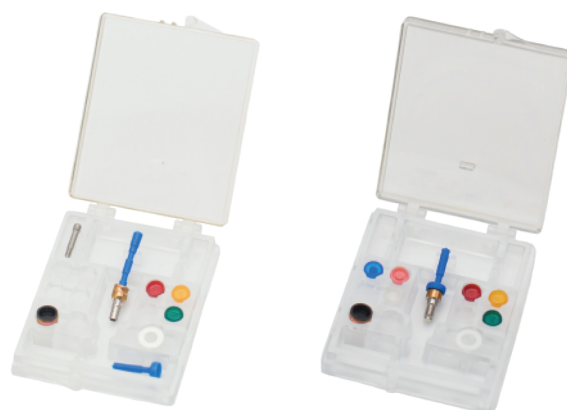
The available Docklocs abutment drivers ensure that you can apply proper torque to every abutment. In both tri-lobe and 1,25mm hex drive configurations, Docklocs abutment drivers feature a latch connection that compatible with a wide variety of handpieces.



Available All-in-One Packaging

Further adding to the convenience of the Docklocs Overdenture Attachment System is the availability of all-in-one packaging that contains all of the necessary items to complete a case on a single tray.

This includes a denture housing and retention inserts in every variation of force as well as a parallel post and convenient abutment carrier for angled abutments. Contact your Docklocs distributor today for more information on available packaging.



Traditional Packaging

To provide a sense of familiarity, Docklocs abutments and ancillary components are also available in vial packaging configurations. When you are looking for comparable packaging to that which is widely available on the market, choose Docklocs traditional vial configurations. Contact your Docklocs distributor today for more information.



Docklocs®

OVERDENTURE ATTACHMENT SYSTEM

Distributed By:

PROSCAN

www.proscan.be

+32 (0)11 822 650

info@proscan.be

Eikenenweg 71
3520 Zonhoven
Belgium

≡ MEDEALIS

Im Steinbühl 9
69518 Absteinach
Germany
www.medealis.de
+49 6207 2032 597



Docklocs® is a registered trademark of MEDEALIS GmbH. Please refer to individual product labeling or instructions for use for additional product information. Product availability may be limited to select countries and/or regions depending on regulatory clearances. Consult with your local distributor for more information. This material is intended for clinicians only and does not comprise medical advice or recommendations. This material may not be copied or reprinted without the express consent of MEDEALIS GmbH.

©2020 All Rights Reserved.