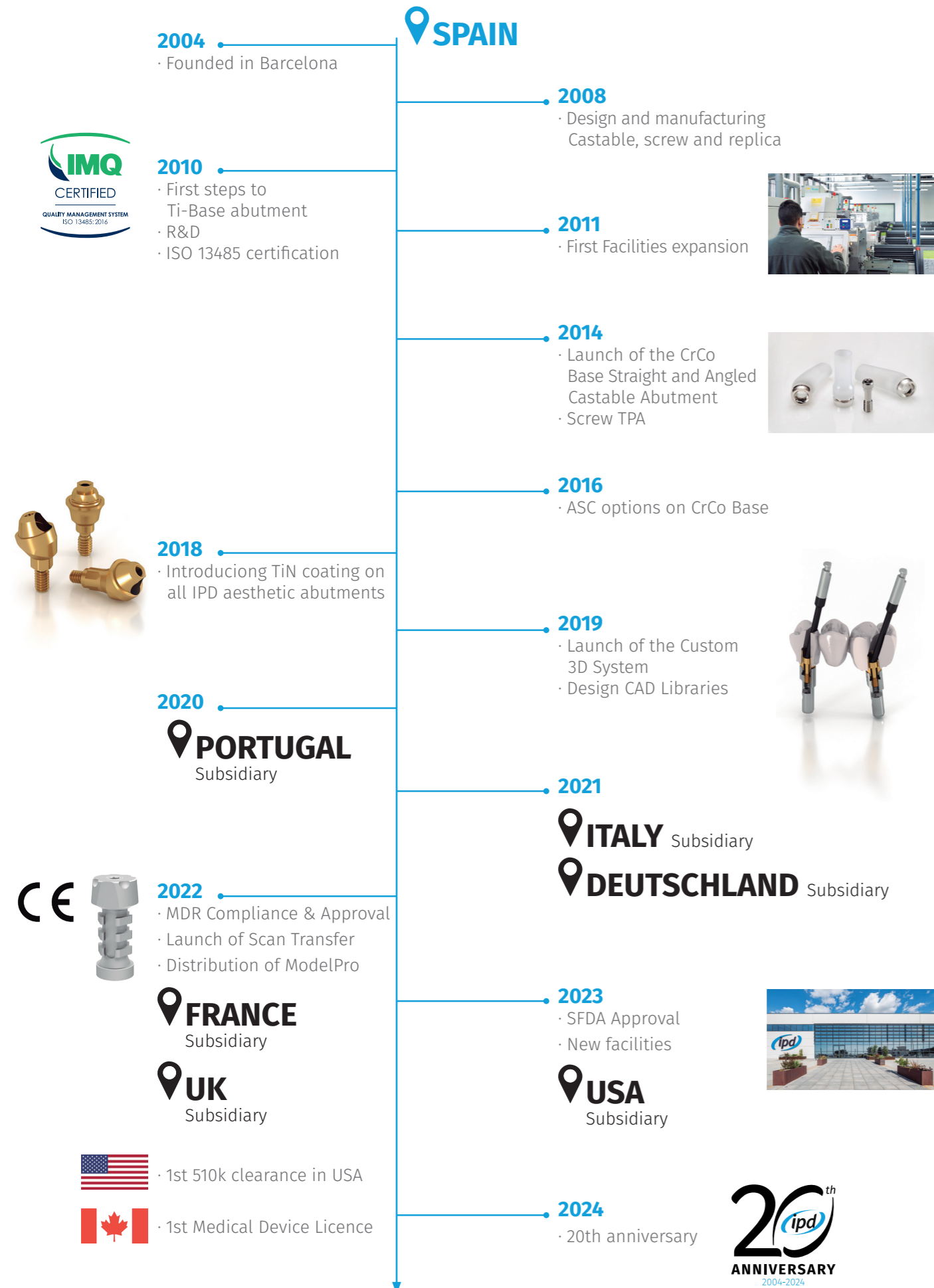


IPD Time-line



Warranty

Because we believe in what we do quality is the first.

IPD offers to all customers a **lifetime replacement warranty** for all components including the abutment screw manufactured and supplied by IPD.

Warranty also applies to third-party implants used in combination with IPD components in case of implant failure & when the implant manufacturer refuses its warranty because of the combination of IPD components.

In these cases, IPD **assures the reimbursement** of prosthetic components and the implant*

*See warranty clauses for further information

Quality certifications



• **Medical Device Manufacturing License**
 Issued by the AEMPS (Spanish Agency of Medicinal Products and Medical Devices).



• **CE MARK**
 All our products have the CE mark according to Regulation EU 2017/745.
 Notified Body: IMQ ISTITUTO ITALIANO DEL MARCHIO DI QUALITÀ
 S.P.A. NB No. 0051.



• **MDSAP (Medical Device Single Audit Program)**
 The Quality Management System complies with the requirements of ISO 13485:2016 and of the requirements of the following regulatory authorities: Australia, Brazil, Canada and United States.



• **FDA (US Food and Drug Administration)**
 IPD is registered in the FDA's Establishment and Device Listing database, with Registration Number 3016954909.



• **Health Canada**
 IPD has the Medical Device Establishment Licence from Health Canada, MDEL No. 18296.



• **ISO 13485:2016. Medical devices. Quality management systems.**
 Requirements for regulatory Certificate No. 9124. IPDE.

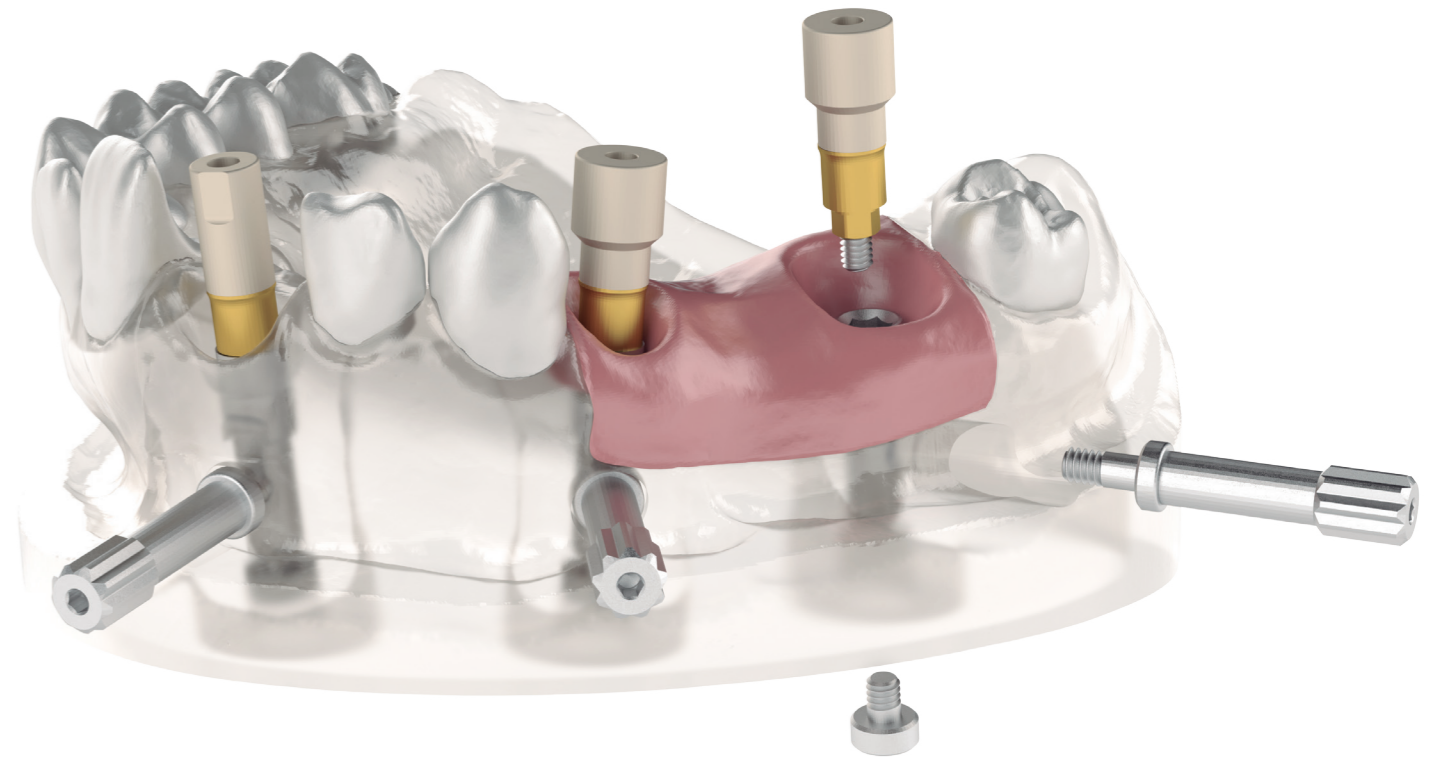


• **ISO 9001:2015. Quality management systems. Requirements**
 Certificat No. 9120. IPDT



• **SFDA (Saudi Food & Drug Administration)**
 IPD has the Medical Device Marketing Authorizations issued by the SFDA according to the Medical Devices' Law.

INTELLIGENT PROSTHETIC DENTISTRY



Headquarters: C. Rosa dels Vents, 9-15, 08338, Premià de Dalt, Spain
 PT Subsidiary: EM514, Zona Industrial da Barracha, lote 11 São Brás de Alportel 8150 017, Portugal.
 IT Subsidiary: Via Aurelia Nord 340ab Arcola (SP), 19021, Italy
 DE Subsidiary: Grabenstr. 18, 40789 Monheim am Rhein, Germany
 FR Subsidiary: 88 Avenue des Ternes, 5017 Paris, France
 UK Subsidiary: Ensor House, Ensor Way, New Mills, High Peak SK22 4NQ, United Kingdom
 US Subsidiary: 1330 SW 22nd St, Suite 200, Miami, FL 33145, USA

www.ipd2004.com @ f v in





From dental to dental

IPD was founded and originated in the dental sector, specializing in the manufacturing and marketing of PROSTHETIC ABUTMENTS for DENTAL IMPLANTS. Available in more than thirty countries, IPD offers a wide range of superior quality products, providing innovative solutions in the field of dental implants/prosthetics. IPD is now a global leader in compatible abutments.

Our team of expert engineers, in collaboration with industry recognized dental professionals and scientists, ensure that the processes and procedures of our high-tech production facility adhere to the highest level of quality and sanitary requirements.

Facts and Figures



Manufacturing and marketing over **3 Mio pieces/year**



Over **2.600 products** references, **400 new** in pipeline



Supporting **50 premium implant systems**, over **80** different implant **connections**



7 Subsidiaries and presence over **30 worldwide** markets



Offering service to over **17.000** loyal customers



Close to **60% market share** in south European markets

Our Digitalized Workflow: Efficiency, Accuracy & Flexibility at your discretion

