

Elos Accurate®

System Code	Platform	IO Scan Body *	Scan Body22™	Print Model Analog	Pre-Milled Blank	Hybrid Base Engaging		Hybrid Base Engaging	Hybrid Base Non-Engaging		Hybrid Base Non-Engaging	Prosthetic screw for straight channels	Prosthetic Hexabolular Screw		Torque	
		IO	SB	PMA	PMB	HBE	HBE-H	HBE-G	Gingival Height	HBN	HBN-H	HBN-G	Gingival Height	AS	AS hexabolular	AS hexabolular
BIO-HORIZONS	Implant System															
	BioHorizons Internal	BHI	3.0 IO 11A-A 3.5 IO 11A-B 4.5 IO 11A-C 5.7 IO 11A-D	SB-BHI30-1 SB-BHI35-1 SB-BHI45-1 SB-BHI57-1	PMA-BHI30-1 PMA-BHI35-1 PMA-BHI45-1 PMA-BHI57-1											
	BioHorizons Multi-Unit Abutment	BHM	4.5 IO 11B-A	SB-BHM45-1	PMA-BHM45-1					HBN-MUA45-1	HBN-MUA45H-1			AS-MUAM1403POS	AS-MUAM1403A-1	15 Ncm
CAMLOG	Camlog®	CAS	3.3 IO 9A-A 3.8 IO 9A-B 4.3 IO 9A-C 5 IO 9A-D 6 IO9A-D	SB-CAS33-1 SB-CAS38-1 SB-CAS43-1 SB-CAS50-1	PMA-CAS33-1 PMA-CAS38-1 PMA-CAS43-1 PMA-CAS50-1 PMA-CAS60-1	PMB-CAS33-1 PMB-CAS38-1 PMB-CAS43-1 PMB-CAS50-1 PMB-CAS60-1								AS-CASM1610POS AS-CASM1610POS AS-CASM1610POS AS-CASM2010POS AS-CASM2010POS	AS-CASM1609A-1 AS-CASM2009A-1	20 Ncm
	Camlog® Bar Abutment	CBA	3.3-4.3 IO 9B-A	SB-CBA43-1	PMA-CBA43-1					HBN-CBA43-1					AS-CBAM1604A-1	15 Ncm
	Ankylos®	DAN	3.5-7.0 IO 8B-A	SB-DAN35-1	PMA-DAN35/70-1											
	Ankylos Balance Base Abutment	DBA	BB NP IO 8C-A	SB-DBA40-1	PMA-DBA40-1					HBN-DBA40-1	HBN-DBA40H-1			AS-DBAM1605POS	AS-DBAM1605A-1	10 Ncm
	Astra Tech TX (Known as TX connection)	ATO	3.0 IO 3A-A 3.5/4.0 IO 3A-B 4.5/5.0 IO 3A-C	SB-ATO30-1 SB-ATO35-1 SB-ATO45-1	PMA-ATO30-1 PMA-ATO35-1 PMA-ATO45-1	PMB-ATO30-1 PMB-ATO35-1 PMB-ATO45-1	HBE-ATO30-1 HBE-ATO35/40-1 HBE-ATO45/50-1							AS-ATOM148POS AS-ATOM168POS AS-ATOM2010POS	AS-ATOM1408A-1 AS-ATOM1608A-1 AS-ATOM2010A-1	15 Ncm 20 Ncm 25 Ncm
	Astra Tech UniAbutment	ATU	20° IO 3D-B 45° IO 3D-C	SB-ATU20-1 SB-ATU45-1	PMA-ATU20-1 PMA-ATU45-1					HBN-ATU20-1 HBN-ATU45-1	HBN-ATU20H-1				AS-ATUM1405A-1	15 Ncm
	Astra Tech EV (Known as EV connection)	ATE	3.0 XS IO 3B-A 3.6 S IO 3B-B 4.2 M IO 3B-C 4.8 L IO 3B-D 5.4 XL IO 3B-E	SB-ATE30-1 SB-ATE36-1 SB-ATE42-1 SB-ATE48-1 SB-ATE54-1	PMA-ATE30-1 PMA-ATE36-1 PMA-ATE42-1 PMA-ATE48-1 PMA-ATE54-1	PMB-ATE30-1 PMB-ATE36-1 PMB-ATE42-1 PMB-ATE48-1 PMB-ATE54-1	HBE-ATE30-1 HBE-ATE36-1 HBE-ATE42-1 HBE-ATE48-1 HBE-ATE54-1	HBE-ATE36H-1 HBE-ATE42H-1 HBE-ATE48H-1						AS-A TEM148POS AS-A TEM168POS AS-A TEM188POS AS-A TEM208POS	AS-A TEM1408A-1 AS-A TEM1608A-1 AS-A TEM1810A-1 AS-A TEM2010A-1	25 Ncm
	Astra Tech Profile EV	ATE-P	4.2 IO 3C-A 4.8 IO 3C-B	SB-ATE42P-1 SB-ATE48P-1	PMA-ATE42P-1 PMA-ATE48P-1											
	MultiBase EV	MUA	4.5 IO 2C-A	SB-MUA45-1	PMA-MUA45-1					HBN-MUA45-1	HBN-MUA45H-1			AS-MUAM1403POS	AS-MUAM1403A-1	15 Ncm
	Astra Tech UniAbutment EV	AUE	UA33° IO 3D-A	SB-AUE33-1	PMA-AUE33-1					HBN-AUE33-1	HBN-AUE33H-1			AS-AUEM1805A-1		15 Ncm
	Xive®	DXI	3.0 IO 8A-A 3.4 IO 8A-B 3.8 IO 8A-C 4.5 IO 8A-D 5.5 IO 8A-D	SB-DXI30-1 SB-DXI34-1 SB-DXI38-1 SB-DXI45-1 SB-DXI55-1	PMA-DXI30-1 PMA-DXI34-1 PMA-DXI38-1 PMA-DXI45-1 PMA-DXI55-1	PMB-DXI30-1 PMB-DXI34-1 PMB-DXI38-1 PMB-DXI45-1 PMB-DXI55-1								AS-DXIM1409POS AS-DXIM1609POS AS-DXIM1609POS AS-DXIM1609POS AS-DXIM1609POS		24 Ncm
HIOSSEN	ET	HET	M 3.2 IO 12A-A M 3.5 IO 12A-B R 4.5 IO 12A-B	SB-HET35-1 SB-HET45-1	PMA-HET32-1 PMA-HET45-1	PMB-HET35-1 PMB-HET45-1	HBE-HET35-1 HBE-HET45-1	HBE-HET35H-1 HBE-HET45H-1			HBN-HET35H-1 HBN-HET45H-1			AS-HETM1610POS AS-HETM2008POS	AS-HETM1610A-1 AS-HETM2008A-1	20 Ncm 30 Ncm
NEODENT	Grand Morse	NGM	3.5 IO 13A-A 4.5 IO 13A-A 5.5 IO 13A-A	SB-NGM45-1	PMA-NGM35-1	PMB-NGM45-1	HBE-NGM45-1	HBE-NGM45H-1			HBN-NGM45H-1			AS-NGMM1610POS	AS-NGMM1610A-1	20 Ncm
	Grand Morse Micro Abutment	NGA	3.5 IO 13B-A	SB-NGA35-1	PMA-NGA35-1					HBN-NGA35-1	HBN-NGA35H-1			AS-MUAM1403POS	AS-MUAM1403A-1	15 Ncm
	Grand Morse Mini Abutment	MUA	4.5 IO 2C-A	SB-MUA45-1	PMA-MUA45-1					HBN-MUA45-1	HBN-MUA45H-1			AS-MUAM1403POS	AS-MUAM1403A-1	15 Ncm
	Brånemark System (Known as External Hex connection)	BRA	NP IO 6A-A RP IO 6A-B WP IO 6A-C	SB-BRA35-1 SB-BRA41-1 SB-BRA51-1	PMA-BRA35-1 PMA-BRA41-1 PMA-BRA51-1	PMB-BRA35-1 PMB-BRA41-1 PMB-BRA51-1	HBE-BRA35-1 HBE-BRA41-1 HBE-BRA51-1	HBE-BRA35H-1 HBE-BRA41H-1			HBN-BRA35-1 HBN-BRA41-1 HBN-BRA51-1			AS-BRAM167POS AS-BRAM207POS AS-BRAM257POS	AS-BRAM1607A-1 AS-BRAM2007A-1 AS-BRAM2507A-1	35 Ncm
	Conical Connection	NBA	3.0 IO 2B-D SA NP IO 2B-A SA IO 2B-A RP IO 2B-B SA IO 2B-B WP IO 2B-C SA IO 2B-C	SB-NBA30/SINGLE-1 SB-NBA35/SINGLE-1 SB-NBA35/BRIDGE-1 SB-NBA43/SINGLE-1 SB-NBA43/BRIDGE-1 SB-NBA60/SINGLE-1 SB-NBA60/BRIDGE-1	PMA-NBA30-1 PMA-NBA35-1 PMA-NBA43-1 PMA-NBA60-1	PMB-NBA30-1 PMB-NBA35-1 PMB-NBA43-1 PMB-NBA60-1	HBE-NBA30-1 HBE-NBA35-1 HBE-NBA43-1 HBE-NBA60-1	HBE-NBA35H-1 HBE-NBA43H-1 HBE-NBA60H-1	HBE-NBA30- G2.0, G3.0 G1.0, G2.0, G3.0 G1.5		HBN-NBA35-1 HBN-NBA35H-1 HBN-NBA43/50-1 HBN-NBA43/50H-1 HBN-NBA60-1	HBN-NBA35-1 HBN-NBA35H-1 HBN-NBA43-1 HBN-NBA60-1		AS-NBAM1407POS AS-NBAM168POS AS-NBAM207POS	AS-NBAM1407A-1 AS-NBAM1608A-1 AS-NBAM1610A-1 AS-NBAM2007A-1 AS-NBAM2009A-1	15 Ncm 35 Ncm
	Multi-Unit Abutment	MUA	NP/RP IO 2C-A WP IO 2C-B	SB-MUA45-1 SB-MUA60-1	PMA-MUA45-1 PMA-MUA60-1					HBN-MUA45-1 HBN-MUA60-1	HBN-MUA45H-1 HBN-MUA60H-1			AS-MUAM1403POS AS-MUAM1804POS	AS-MUAM1403A-1 AS-MUAM1804A-1	15 Ncm
	Replace® (Known as Internal Tri-Channel connection)	NBR	NP IO 2A-A RP IO 2A-B WP IO 2A-C 6.0 IO 2A-D	SB-NBR35-1 SB-NBR43-1 SB-NBR50-1 SB-NBR60-1	PMA-NBR35-1 PMA-NBR43-1 PMA-NBR50-1 PMA-NBR60-1	PMB-NBR35-1 PMB-NBR43-1 PMB-NBR50-1 PMB-NBR60-1	HBE-NBR35-1 HBE-NBR43-1 HBE-NBR50-1 HBE-NBR60-1	HBE-NBR35H-1 HBE-NBR43H-1			HBN-NBR35-1 HBN-NBR43-1 HBN-NBR50-1 HBN-NBR60-1	HBN-NBR35H-1 HBN-NBR43H-1		AS-NBRM2010POS	AS-NBRM2010A-1	35 Ncm
STRAUMANN	Bone Level	SBO	NC IO 4A-A RC IO 4A-B	SB-SBO33-1 SB-SBO41-1	PMA-SBO33-1 PMA-SBO41-1	PMB-SBO33-1 PMB-SBO41-1	HBE-SBO33-1 HBE-SBO41/48-1	HBE-SBO33H-1 HBE-SBO41/48H-1	HBE-SBO33- G0.8, G2.0, G3.0, G4.0		HBN-SBO33-1 HBN-SBO41/48-1	HBN-SBO33H-1 HBN-SBO41H-1	HBN-SBO33- G0.8, G2.0, G3.0, G4.0	AS-SBOM1608POS	AS-SBOM1608A-1 AS-SBOM1610A-1	35 Ncm
	Screw-retained Abutment	SSA	3.5 IO 4D-A 4.6 IO 4D-B	SB-SSA35-1 SB-SSA46-1	PMA-SSA35-1 PMA-SSA46-1						HBN-SSA35-1 HBN-SSA46-1	HBN-SSA35H-1 HBN-SSA46H-1			AS-SSAM1404A-1	15 Ncm
	Standard (Known as Tissue Level connection)	SSY	3.5 NNC IO 4C-A RN IO 4B-A WN IO 4B-B	SB-SSY48-1 SB-SSY65-1	PMA-SSY48-1 PMA-SSY65-1	PMB-SSY48-1 PMB-SSY65-1	HBE-SSY48-1 HBE-SSY65-1	HBE-SSY48H-1 HBE-SSY65H-1			HBN-SSY48-1 HBN-SSY65-1	HBN-SSY48H-1		AS-SSYM207POS	AS-SSYM2007A-1	35 Ncm
	BLX	SBX	4.5 RB IO 4E-A 6.5 WB IO 4E-A	SB-SBX45-1	PMA-SBX45-1	PMB-SBX45-1	HBE-SBX45-1	HBE-SBX45H-1	HBE-SBX45- G1.5, G2.5, G3.5		HBN-SBX45-1	HBN-SBX45H-1	HBN-SBX45- G1.5, G2.5, G3.5	AS-SBXM1606POS	AS-SBXM1606A-1 AS-SBXM1608A-1	35 Ncm
	Certain® Internal Connection	BCE	3.4 IO 7B-A 4.1 IO 7B-A 5.0 IO 7B-B 6.0 IO 7B-B	SB-BCE34-1 SB-BCE41-1 SB-BCE41-1	PMA-BCE34-1 PMA-BCE41-1 PMA-BCE50-1 PMA-BCE60-1	PMB-BCE34-1 PMB-BCE41-1 PMB-BCE50-1 PMB-BCE60-1	HBE-BCE34-1 HBE-BCE41-1 HBE-BCE50-1 HBE-BCE60-1	HBE-BCE34H-1 HBE-BCE41H-1 HBE-BCE50H-1 HBE-BCE60H-1						AS-BCEM168POS	AS-BCEM1608A-1	20 Ncm
	External Hex Connection	BEH	3.4 IO 7A-A 4.1 IO 7A-A 5.0 IO 7A-B 6.0 IO 7A-B	SB-BEH34-1 SB-BEH41-1 SB-BEH50-1 SB-BEH60-1	PMA-BEH34-1 PMA-BEH41-1 PMA-BEH50-1 PMA-BEH60-1	PMB-BEH34-1 PMB-BEH41-1 PMB-BEH50-1 PMB-BEH60-1								AS-BEHM208POS AS-BEHM208POS AS-BEHM208POS AS-BEHM208POS		32 Ncm
	Tapered Screw-Vent Implant	ZSV	3.5 IO 5A-A 4.5 IO 5A-B 5.7 IO 5A-C	SB-ZSV35-1 SB-ZSV45-1 SB-ZSV57-1	PMA-ZSV35-1 PMA-ZSV45-1 PMA-ZSV57-1	PMB-ZSV35-1 PMB-ZSV45-1 PMB-ZSV57-1	HBE-ZSV35-1 HBE-ZSV45-1 HBE-ZSV57-1	HBE-ZSV35H-1 HBE-ZSV45H-1 HBE-ZSV57H-1			HBN-ZSV35-1 HBN-ZSV45-1 HBN-ZSV57-1	HBN-ZSV35H-1 HBN-ZSV45H-1 HBN-ZSV57H-1		AS-ZSVM1808POS	AS-ZSVM1808A-1	30 Ncm
	Low Profile Abutment	MUA	4.5 IO 2C-A	SB-MUA45-1	PMA-MUA45-1						HBN-MUA45-1	HBN-MUA45H-1		AS-MUAM1403POS	AS-MUAM1403A-1	15 Ncm

Europe only

Available in Q3 2025

Available in Q4 2025

Phasing out in 2025

* The IO Scan Body will be phased out in 2025 and replaced by the ScanBody22 as current stock is sold out, except for the following three implant systems, which will remain available: Dentsply Sirona Xive®, Zimvie External Hex Connection, Nobel Biocare™ Conical Connection

Instruments on next page

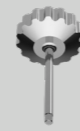
Not all products are available in all countries

Elos Accurate® Instruments

Elos Accurate® Scan Body Driver



C13048



C18512



SBD-M-1

Elos Accurate® Analog Pliers



PMA-AIT-1

Elos Accurate® Analog Insertion Pin



PMA-AIP-2

Elos Accurate® Analog Insertion Screw



PMA-AIS-5

Elos Accurate® Prosthetic Screwdriver



PS-AH18-1



PS-AH26-1



PS-AH34-1

Elos Torque Wrenches



Elos offers a range of torque wrenches, developed with specific functional principles to ensure precision and reliability across various applications.

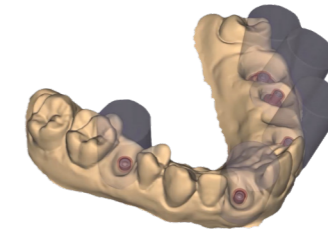
For OEM customers, we provide customization options:

- **Custom Design:** Torque wrenches tailored to specific needs, such as custom marking and torque ranges.
- **Logo Marking:** Branding options with customized logo placement.

Customization options are available subject to agreement and minimum order quantity (MOQ)

Elos Accurate® Digital SMART Flow

from the first scan to final smile



DOWNLOAD THE LIBRARY

